



# Shunt Meter

## For DC Current Measurement

Easy to Use. Easy to Read.

**Programmable dynamic backlight colour**

**Warning flash**

**0 - 1VDC Input**  
High resolution for DC Current Shunts  
Low Side Applications

**0.1% Accuracy**

**40** segment curved bar graph display

**Combined digital and bar graph display**

**Programmable scale**

**USB 2.0**  
USB port for custom user settings

**WIDE viewing angle**

**Full 4 digit readout for accuracy**

**Programmable 4 digit star-burst display**

**Custom messages & annunciators**

**2** alarm set points

**Less than 53mm deep**

**2 physical digital and analogue outputs**

**PLC**

Featuring an acclaimed easy-to-read display and a high resolution input, the Shunt Meter takes the APM into a wide range of new applications, where accurate DC current measurement is required.

The APM Shunt Meter is ideal for DC current measurement applications in marine, leisure, material handling, and industrial applications such as power supplies, load banks and charging systems.

The programmable scale and custom annunciators mean users can tailor the meter to display their critical parameters exactly how they want. Dynamic backlighting, in conjunction with setpoints, means operators are visually alerted when a parameter is out of range. The two outputs can be used to connect the APM to other systems in the process, meaning the APM Shunt Meter is much more than just a display.

## Key Features

### Large multi-format display that incorporates:

- 40 segment bar graph display
- Large 4-digit display
- Separate Starburst display area for annunciators, custom messages and alarm information
- Dynamic backlight colour

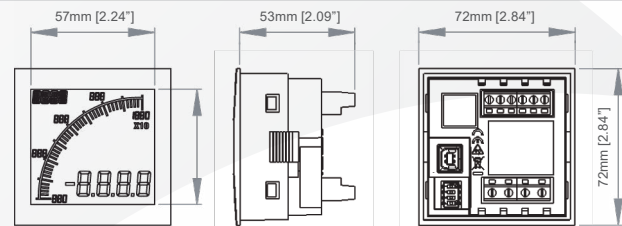
### Programmable:

- Display Range (Both Min & Max Values)
- Custom annunciators
- User-selectable backlight color and intensity
- Two independent alarm set-points
- Two independent outputs
- 4-20mA analogue monitor output

### Visibility:

- User-adjustable backlight brightness and colour
- Large display
- Wide viewing angle (horizontal and vertical)
- Custom annunciators

### Dimensions:

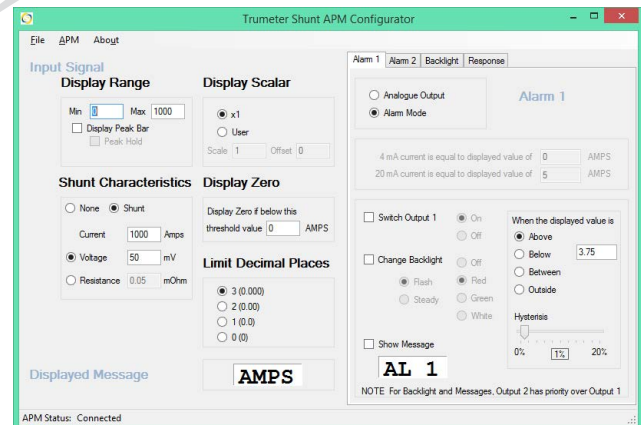


Panel cutout: 68mm x 68mm [2.68" x 2.68"] as per DIN43700/IEC61554

|                              |   |
|------------------------------|---|
| <b>INPUT</b>                 | <b>VOLTAGE</b>                                |
| Range                        | 0 - 1 VDC                                     |
| Impedance                    | 1 Meg   |
| Accuracy                     | 0.1% of signal or 0.5mV, whichever is greater |
| <b>ENVIRONMENTAL</b>         |   |
| Temperature - operating      | -10 to +60°C                                  |
| Temperature - storage        | -40 to +70°C                                  |
| IP rating (from the front)   | IP65  |
| NEMA rating (from the front) | Type 4 & Type 12                              |
| <b>POWER SUPPLY</b>          |   |
| Nominal Input                | 12-24 VDC                                     |
| <b>DISPLAY</b>               |   |
| Number of digits             | 4   |
| Digit height                 | 12mm [0.47"]                                  |
| Number of message characters | 4   |
| Backlight colours            | Red, Green, White                             |
| LCD display                  | Positive or Negative                          |
| <b>OUTPUTS</b>               |   |
| Max voltage                  | 34V   |
| Max current                  | 500mA   |
| Analogue output              | 4-20mA  |
| <b>CERTIFICATION</b>         | UL, cUL, CE                                   |

## Easy To Use Software

Just plug into any USB port on your PC, run the freely available APM Configurator application and you're off. No drivers required.



### Part Numbers:

|               |  |
|---------------|--|
| APM-SHUNT-APO | APM Shunt Meter, Positive LCD with outputs |
| APM-SHUNT-ANO | APM Shunt Meter, Negative LCD with outputs |
| 022128-01     | USB Cable                                  |